

International

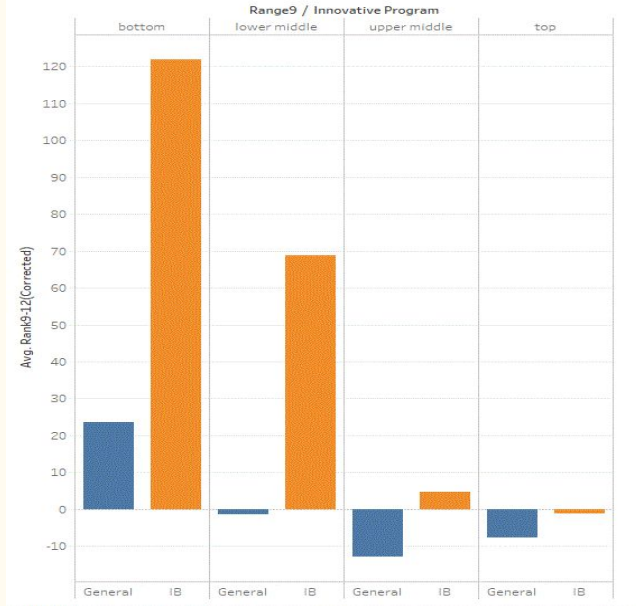
Baccalaureate (IB)

—
Diploma Program (DP)

All of the things that shouldn't matter.....

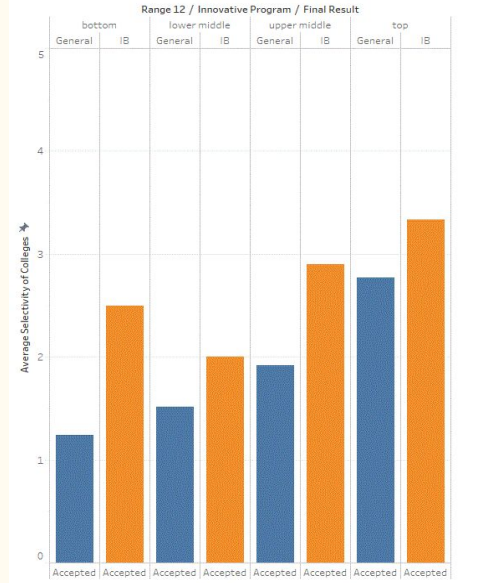
....but we all know really do!

Change in Class Rank from Grade 9-12
By 12th Grade class Rank Quartile

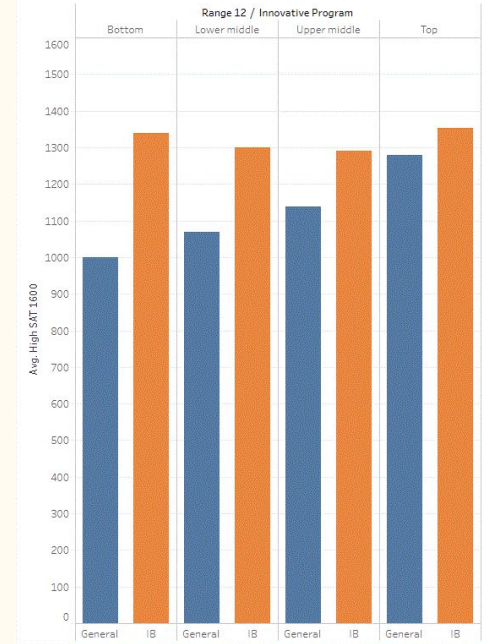


IB by the numbers....

College Selectivity by Class Rank and Program



SAT Scores by Class Rank and Program



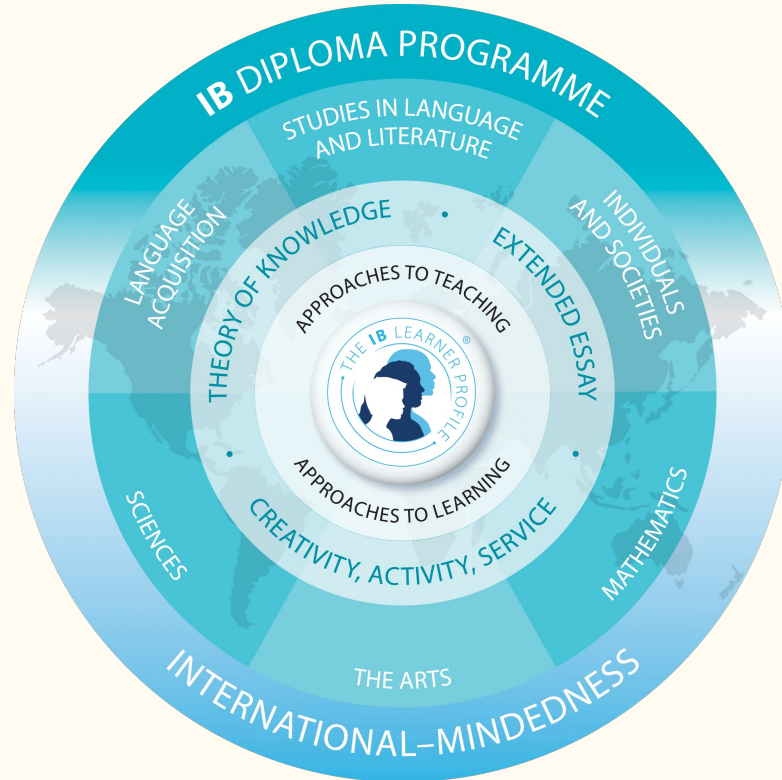
Where we go to college.....

Amherst College
Boston University
Brandeis University
Brown University
Carnegie Mellon University
Colgate University
College of the Holy Cross
Cornell University
County College of Morris
Dartmouth College
Dickinson College
Drew University
Drexel University
Harvard University
Johns Hopkins University
Juniata College
Lafayette College
Lehigh University
Liberty University

Miami University, Oxford
Muhlenberg College
New York University
Northeastern University
Princeton University
Rensselaer Polytechnic Institute
Rutgers University
Saint Joseph's University
Stevens Institute of Technology
Syracuse University
Temple University
The College of New Jersey
University of British Columbia
University of Chicago
University of Delaware
University of Maryland University of
Massachusetts Dartmouth
University of Massachusetts, Amherst

University of Pennsylvania
University of Southern California
University of the Sciences in
Philadelphia
University of Virginia
Vassar College
Villanova University
Wake Forest University
Washington College
William Paterson University
Yale University

The IB Model

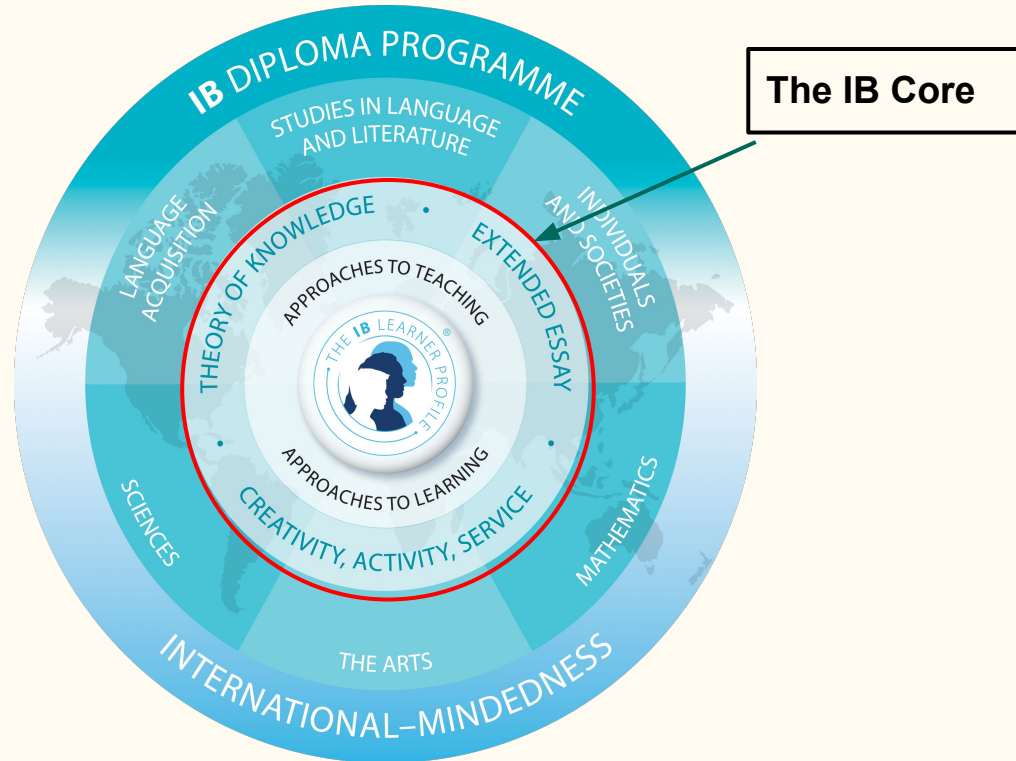


International Baccalaureate Programs

International Baccalaureate Diploma Program (IBDP)

- The IB Diploma Program aims to develop students who have excellent breadth and depth of knowledge - students who flourish physically, intellectually, emotionally and ethically.

The IB Model

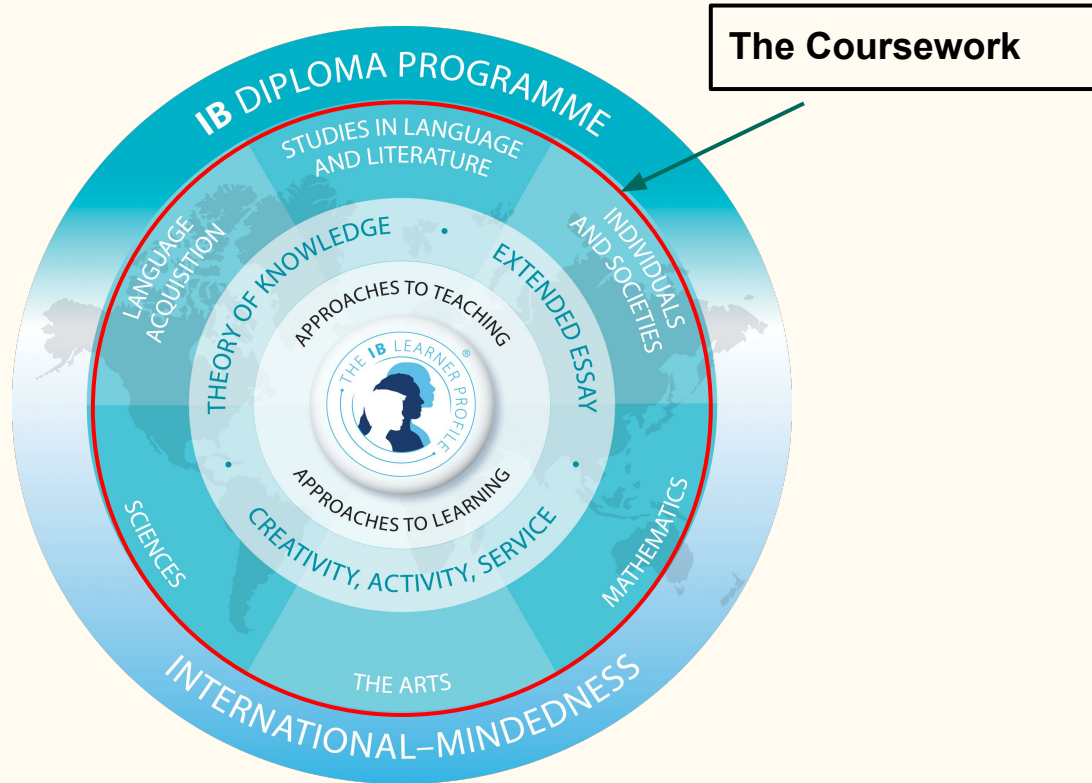


Core Framework

IBDP Requirements:

- Participation in the IBDP Core
 - Theory of Knowledge (TOK)
 - Creativity, Activity and Service (CAS)
 - Extended Essay (EE)

The IB Model



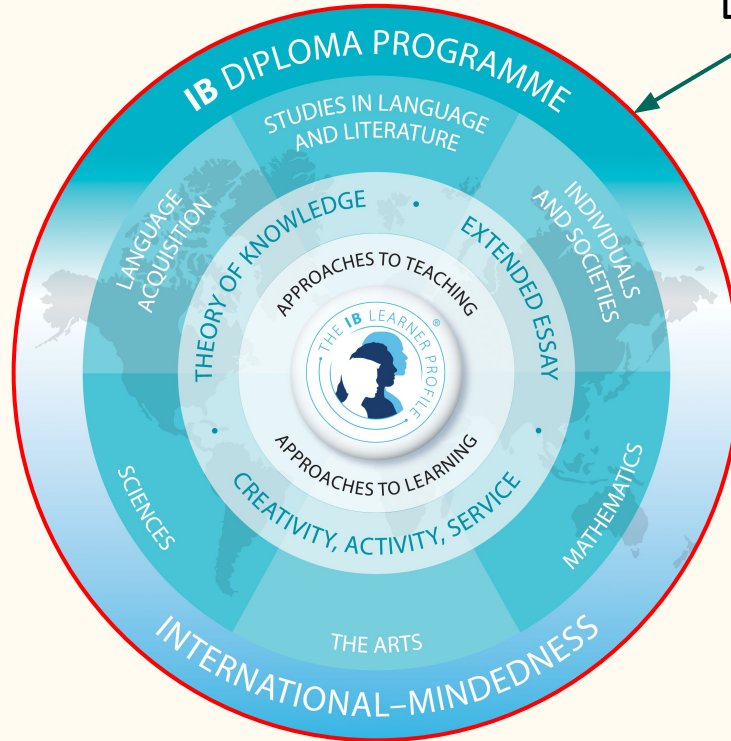
Course Load Framework

IBDP Requirements:

- All core classes taken in IB
- The Core
 - TOK
 - EE
 - CAS

The IB Model

The Big Picture



IB learner profile

The aim of all IB programmes is to develop internationally minded people who, recognizing their common humanity and shared guardianship of the planet, help to create a better and more peaceful world.

As IB learners we strive to be:

INQUIRERS

We nurture our curiosity, developing skills for inquiry and research. We know how to learn independently and with others. We learn with enthusiasm and sustain our love of learning throughout life.

KNOWLEDGEABLE

We develop and use conceptual understanding, exploring knowledge across a range of disciplines. We engage with issues and ideas that have local and global significance.

THINKERS

We use critical and creative thinking skills to analyse and take responsible action on complex problems. We exercise initiative in making reasoned, ethical decisions.

COMMUNICATORS

We express ourselves confidently and creatively in more than one language and in many ways. We collaborate effectively, listening carefully to the perspectives of other individuals and groups.

PRINCIPLED

We act with integrity and honesty, with a strong sense of fairness and justice, and with respect for the dignity and rights of people everywhere. We take responsibility for our actions and their consequences.

OPEN-MINDED

We critically appreciate our own cultures and personal histories, as well as the values and traditions of others. We seek and evaluate a range of points of view, and we are willing to grow from the experience.

CARING

We show empathy, compassion and respect. We have a commitment to service, and we act to make a positive difference in the lives of others and in the world around us.

RISK-TAKERS

We approach uncertainty with forethought and determination; we work independently and cooperatively to explore new ideas and innovative strategies. We are resourceful and resilient in the face of challenges and change.

BALANCED

We understand the importance of balancing different aspects of our lives—intellectual, physical, and emotional—to achieve well-being for ourselves and others. We recognize our interdependence with other people and with the world in which we live.

REFLECTIVE

We thoughtfully consider the world and our own ideas and experience. We work to understand our strengths and weaknesses in order to support our learning and personal development.

The IB learner profile represents 10 attributes valued by IB World Schools. We believe these attributes, and others like them, can help individuals and groups become responsible members of local, national and global communities.

