

International

Baccalaureate (IB)

—  
Diploma Program (DP)

All of the things that shouldn't matter.....

....but we all know really do!

## ***Where we go to college.....***

Amherst College  
Barnard College at Columbia  
Boston University  
Brandeis University  
Brown University  
Carnegie Mellon University  
Colgate University  
College of the Holy Cross  
Cornell University  
County College of Morris  
Dartmouth College  
Dickinson College  
Drew University  
Drexel University  
Harvard University  
Johns Hopkins University  
Juniata College  
Lafayette College  
Lehigh University

Liberty University  
Miami University, Oxford  
Muhlenberg College  
New York University  
Northeastern University  
Princeton University  
Rensselaer Polytechnic Institute  
Rutgers University  
Saint Joseph's University  
Stevens Institute of Technology  
Syracuse University  
Temple University  
The College of New Jersey  
University of British Columbia  
University of Chicago  
University of Delaware  
University of Maryland University of  
Massachusetts Dartmouth  
University of Massachusetts, Amherst

University of Pennsylvania  
University of Southern California  
University of the Sciences in  
Philadelphia  
University of Virginia  
Vassar College  
Villanova University  
Wake Forest University  
Washington College  
William Paterson University  
Yale University

## ***Where we go to college.....***

Amherst College  
Barnard College at Columbia  
Boston University  
Brandeis University  
Brown University  
Carnegie Mellon University  
Colgate University  
College of the Holy Cross  
Cornell University  
**County College of Morris**  
Dartmouth College  
Dickinson College  
Drew University  
Drexel University  
**Harvard University**  
Johns Hopkins University  
Juniata College  
Lafayette College  
Lehigh University

Liberty University  
Miami University, Oxford  
**McGill University**  
Muhlenberg College  
New York University  
Northeastern University  
Princeton University  
Rensselaer Polytechnic Institute  
Rutgers University  
Saint Joseph's University  
Stevens Institute of Technology  
Syracuse University  
Temple University  
The College of New Jersey  
University of British Columbia  
University of Chicago  
University of Delaware  
University of Maryland University of  
Massachusetts Dartmouth  
University of Massachusetts, Amherst

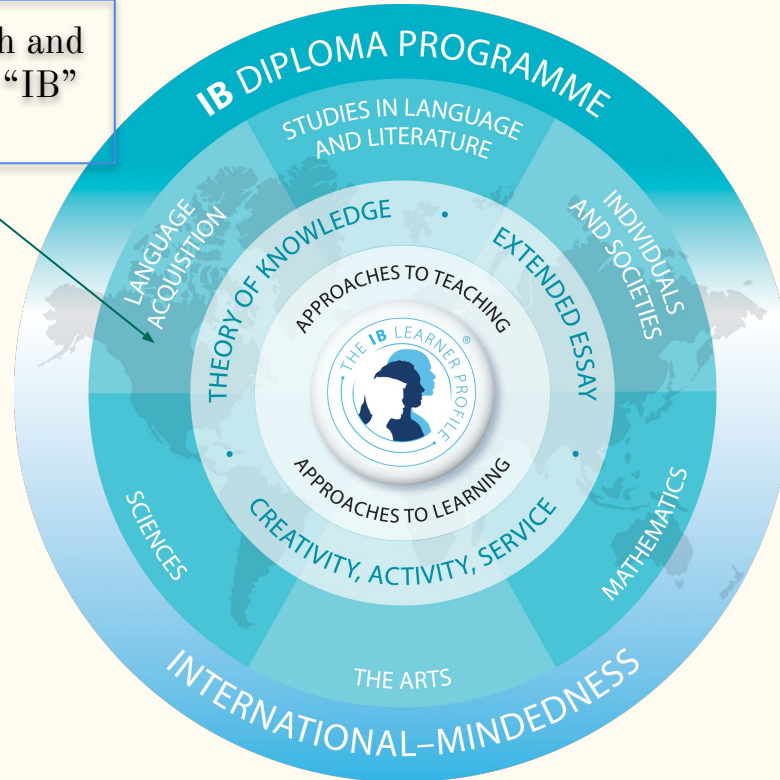
University of Pennsylvania  
University of Southern California  
University of the Sciences in  
Philadelphia  
University of St. Andrews (Scotland)  
University of Virginia  
Vassar College  
Villanova University  
Wake Forest University  
Washington College  
William Paterson University  
Yale University

# The IB Model



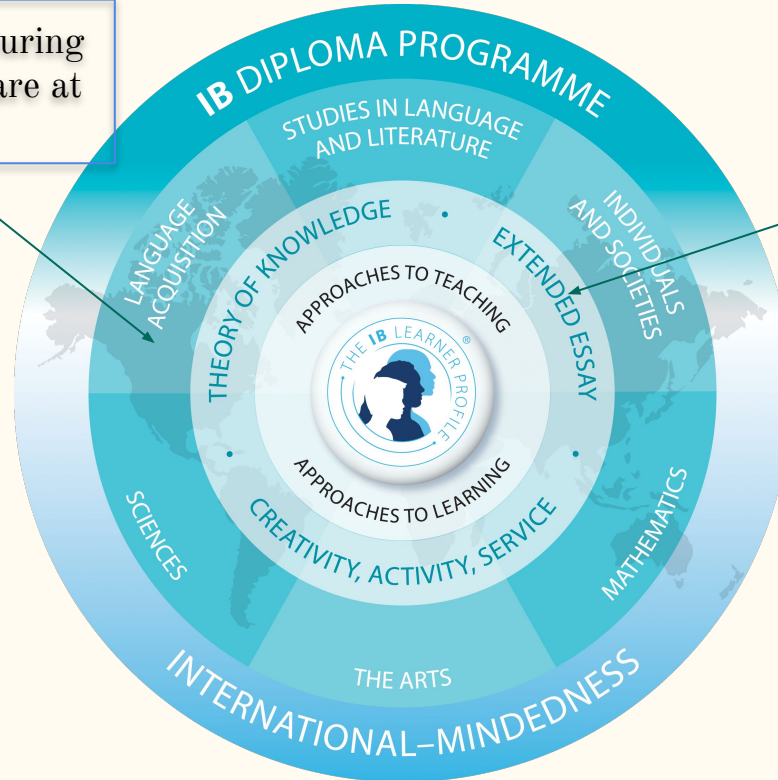
# The IB Model

All classes during 11th and 12th grade are at the “IB” level



# The IB Model

All students' classes during 11th and 12th grade are at the "IB" level



The "core" is what really sets IB apart!

# IB learner profile

The aim of all IB programmes is to develop internationally minded people who, recognizing their common humanity and shared guardianship of the planet, help to create a better and more peaceful world.

As IB learners we strive to be:

## INQUIRERS

We nurture our curiosity, developing skills for inquiry and research. We know how to learn independently and with others. We learn with enthusiasm and sustain our love of learning throughout life.

## KNOWLEDGEABLE

We develop and use conceptual understanding, exploring knowledge across a range of disciplines. We engage with issues and ideas that have local and global significance.

## THINKERS

We use critical and creative thinking skills to analyse and take responsible action on complex problems. We exercise initiative in making reasoned, ethical decisions.

## COMMUNICATORS

We express ourselves confidently and creatively in more than one language and in many ways. We collaborate effectively, listening carefully to the perspectives of other individuals and groups.

## PRINCIPLED

We act with integrity and honesty, with a strong sense of fairness and justice, and with respect for the dignity and rights of people everywhere. We take responsibility for our actions and their consequences.

## OPEN-MINDED

We critically appreciate our own cultures and personal histories, as well as the values and traditions of others. We seek and evaluate a range of points of view, and we are willing to grow from the experience.

## CARING

We show empathy, compassion and respect. We have a commitment to service, and we act to make a positive difference in the lives of others and in the world around us.

## RISK-TAKERS

We approach uncertainty with forethought and determination; we work independently and cooperatively to explore new ideas and innovative strategies. We are resourceful and resilient in the face of challenges and change.

## BALANCED

We understand the importance of balancing different aspects of our lives—intellectual, physical, and emotional—to achieve well-being for ourselves and others. We recognize our interdependence with other people and with the world in which we live.

## REFLECTIVE

We thoughtfully consider the world and our own ideas and experience. We work to understand our strengths and weaknesses in order to support our learning and personal development.

The IB learner profile represents 10 attributes valued by IB World Schools. We believe these attributes, and others like them, can help individuals and groups become responsible members of local, national and global communities.

