A graphic with a light blue grid background. In the center is a large, red, irregular shape resembling a splash or a cloud. Inside this red shape, the text "Title 1 Math Homework Help" is written in a white, bold, rounded font. Surrounding the red shape are various colorful school supplies: pencils in purple, blue, yellow, and green; paper clips in yellow, purple, and green; and wavy lines in blue, yellow, and green. A red pencil is partially visible at the top right.

**Title 1 Math
Homework
Help**

What is Title 1 Math Homework Help?



- 1.** Title 1 Math Homework Help is supplemental support for struggling students in Morris Hills High School with a focus on students in Geometry and Algebra 2*
- 2.** Homework Help runs from 3:05-4:05 PM on Monday, Tuesday, and Wednesday.
- 3.** Students can choose which day they would like to attend. If space is available, students may attend more than one day.
- 4.** All sessions are held virtually at this time.
- 5.** Two teachers are available through zoom/Google Meet to answer student questions and support learning.

*Students enrolled in other courses may be invited pending space

How does it work?



01

Identification

Criteria includes math averages below a 75% at the mid-quarter or end of marking period and/or teacher referral.

02

Invitation

Student and parent/guardian are invited to the program. Choice of day and number of days to attend are considered.

03

Join Google Classroom

Students are emailed a link to join the Title 1 Math Google Classroom. A zoom link will be provided in Classroom.





I want in!
Now what?



Google CLASSroom



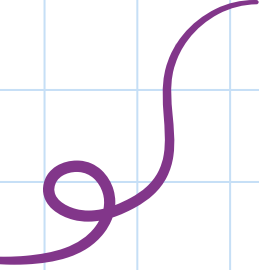
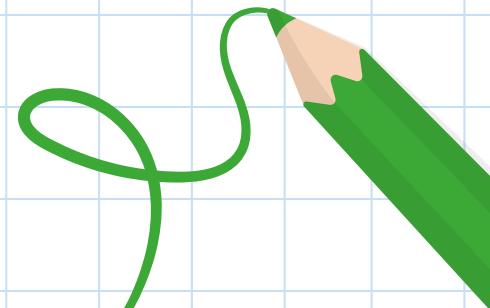
What should I do when I attend an after school homework help session?

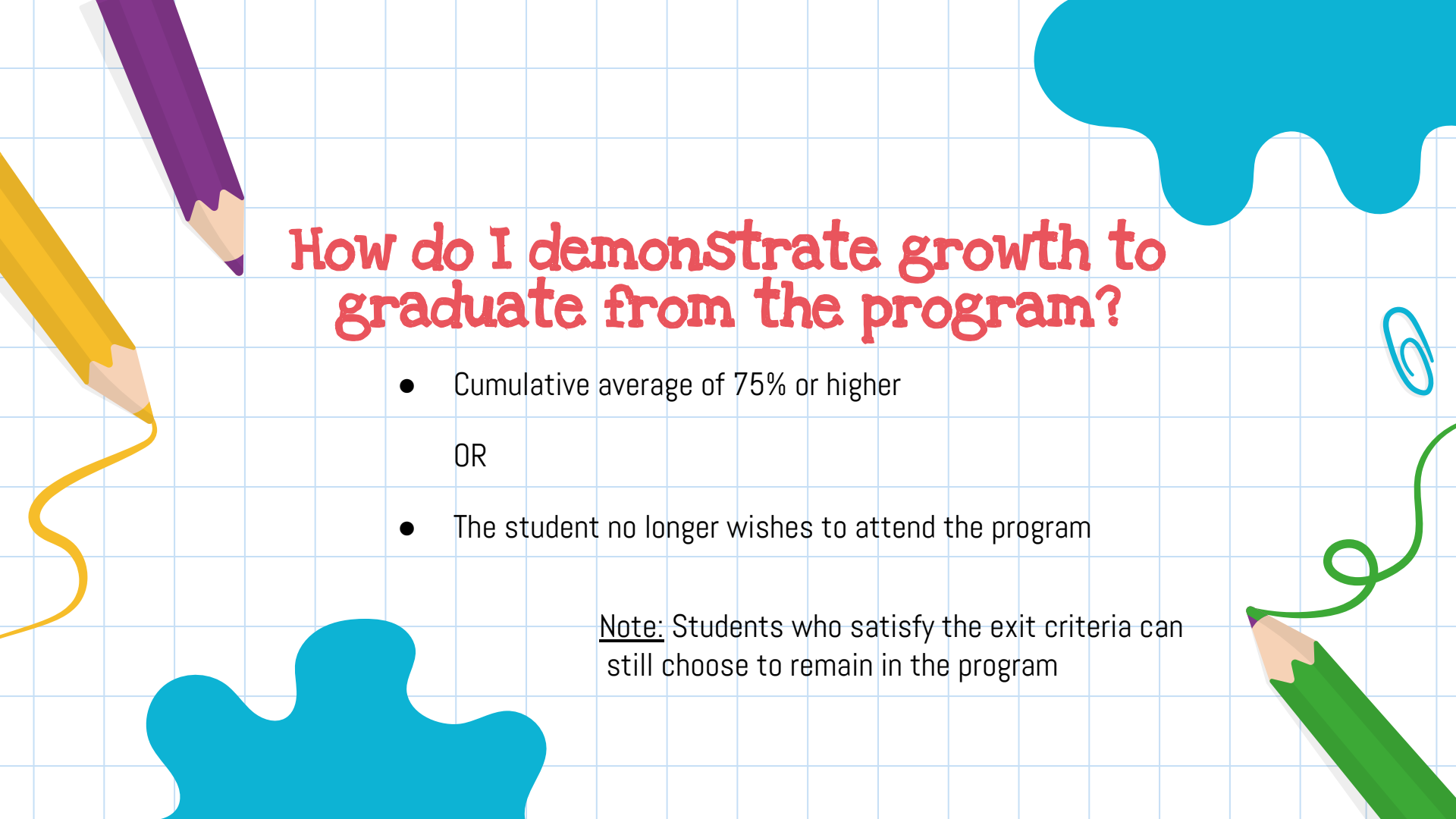
- Open the zoom link to meet up with your teachers
- Complete the attendance form
- Identify what you want to work on
 - Homework
 - ALEKS
- When you are stuck on a problem, ask a teacher for help by unmuting yourself or sending a message via chat
- Teachers will work with individual students or small groups in break out groups

Remember studying for a quiz or test is considered homework, too, so if you need help preparing ask!



Exit Criteria



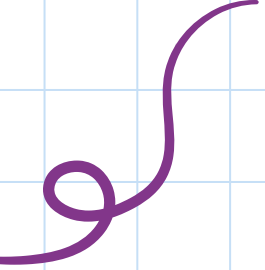
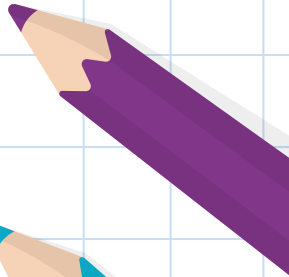


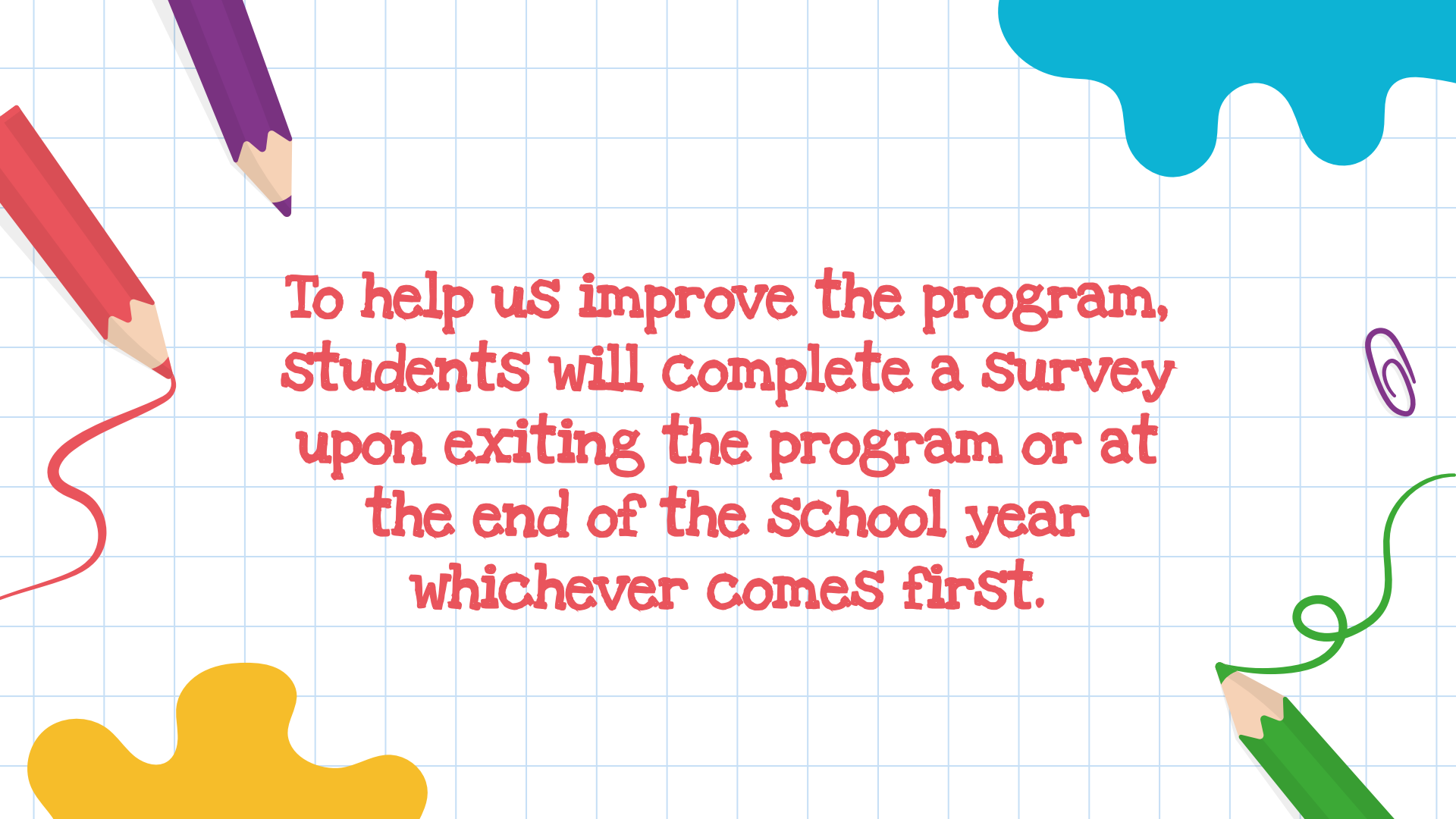
How do I demonstrate growth to graduate from the program?

- Cumulative average of 75% or higher
- OR
- The student no longer wishes to attend the program

Note: Students who satisfy the exit criteria can still choose to remain in the program

Feedback





To help us improve the program,
students will complete a survey
upon exiting the program or at
the end of the school year
whichever comes first.

Questions?

Cheryl Giordano, District Director of Instruction Mathematics

cgiordano@mhrd.org

(973)664-2347

Kristi Diamond, Title 1 Teacher

kdiamond@mhrd.org

Tony Knuth, Title 1 Teacher

tknuth@mhrd.org

